



(Kip) Solenoid Valve Repair Kit, Replacement For Bunn #01111.0002

Fits Models A10-A, AFPO-2, AFPO-2 SL, AFPO-3, AFPO-3 SL, Bunn, COMBO BREWER, CRT5, CRTF5, CT, CTF, CWAPS, CWAPS-MV, CWT, CWT TWIN, CWT-APS, CWT35-3T, CWTF, CWTF TWIN, CWTF-15TS, CWTF-35, CWTF-APS, CWTF-MV, CWTF-TC, CWTF-TWIN, CWTF15-APS, CWTS, CWTS-MV, CWTSR, CWTSR-MV, DUAL, DUAL SH 1.50, DUAL SH 1.75, DUAL SH DBC (Smart Funnel), DUAL SH DBC SST, DUAL TF, DUAL TF DBC, Dual TF DBC, FCD-4, FMD DBC-3, FMD-3, FMDA DBC-3, GMB-PS, H5E, H5X, H5X-18-120, H5X-40-208, HW2, HW2A, ITCB, ITCB-DV, ITCB-DV(35700.0019), JDF-2, JDF-2S, JDF-4, JDF-4 UC, JDF-4S, OL, OL35, OT, PAF, RL, RL35, RT, RT35, SINGLE, SINGLE CW, SINGLE CWTF, SINGLE SH, SINGLE SH 1.5, SINGLE SH 1.75, SINGLE SH DBC, SINGLE TF 1.5, SINGLE TF 1.75, STF, STF-20, STFA, SYSTEM III, SmartWAVE, T3, T3A, T6, T6A, TB-3, TB3, TB3-LP, TB3Q, TB3Q-LP, TU-5, TU3, TU3Q, TU3Q-EZ, TU5Q, TW, TWF, TWF-15, TWF-EZ, TWIN-APS, TWIN-TC, VLPF

[Read More](#)

SKU: 01111.0002

Price: \$11.75

Categories: [Bunn](#)

Product Description

(Kip) Solenoid Valve Repair Kit



0-100 Psi 2 Inch Pressure Gauge With 1/4 Mpt, For Water Or Air, Lead Free

Max Temp 140°F, Black Steel Case With Acrylic Lens

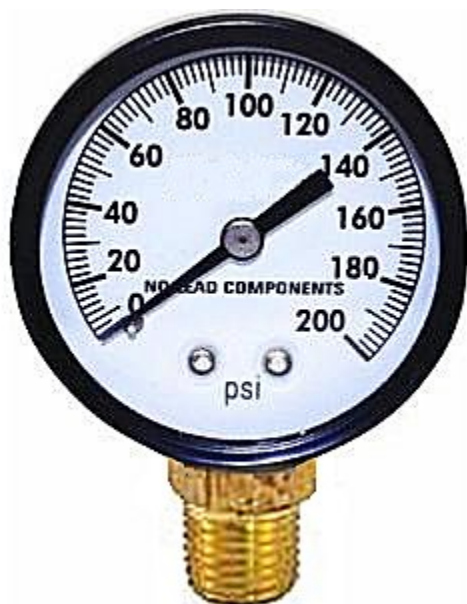
[Read More](#)

SKU: G100

Price: \$5.38

Categories: [Gauges](#)

Product Description



0-200 Psi 2 Inch Pressure Gauge With 1/4 Mpt, For Water Or Air, Lead Free

Max Temp 140°F, Black Steel Case With Acrylic Lens

[Read More](#)

SKU: G200

Price: \$5.49

Categories: [Gauges](#)

Product Description



1 Ft Black Extension Cord, 16/3 SjtW Rated At 105C, UL Approved For Out Door Use

16/3 SjtW 105C, Standard NEMA 5-15 receptacle to NEMA 5-15 plug, perfect for every day connections, Rated for outdoor use, UL listed for safety. Commercial Grade.

[Read More](#)

SKU: ELE323-001

Price: \$2.80

Categories: [Cord](#)

Product Description



1 Wide Bib Incline Rack

Comes With Caps And Extensions To Add More Racks, Item Is For Will Call Only Or Can Be Drop Shipped From Mfg, Box Of 4

[Read More](#)

SKU: 1-BIFJ

Price: \$53.22

Categories: [Bib Accessories](#)

Product Description



1/2 Hp Carbonator Motor

Single/Split Phase, 1725/1425 rpm, 100-120/200-240V, 7.1.7-2/3.4-3.6 amp. 48Y frame with open drip proof (ODP) enclosure, rigid base mounting, & ball ball bearing system. Marathon

[Read More](#)

SKU: 4806

Price: \$298.04

Categories: [Carbonator Accessories](#)

Product Description



1/3 Hp Carbonator Motor

Single/Split Phase, 1725/1425 rpm, 100-120/200-240V, 5.5-5.6/2.7-2.8 amp. 48Y frame with open drip proof (ODP) enclosure, rigid base mounting, and ball ball bearing system.

[Read More](#)

SKU: 4805

Price: \$232.21

Categories: [Carbonator Accessories](#)

Product Description



1/3 Hp Carbonator Motor

CARBONATOR MOTOR 1/3 HP, 115V/60HZ, 6.2 A, 1 PHASE, 1725 RPM, CONTINUOUS DUTY, NO CORD, 48Y FRAME, WELDED BASE, THERMALLY PROTECTED, CENTURY

[Read More](#)

SKU: 4406

Price: \$193.07

Categories: [Carbonator Accessories](#)

Product Description



1/4 Barb Black Premix Disconnect, Liquid

Mfg CM Becker

[Read More](#)

SKU: 3002

Price: \$6.48

Categories: [Bib Accessories](#)

Product Description



1/4 Barb Gray Premix Disconnect, Gas With SS Pin

Mfg CM Becker

[Read More](#)

SKU: 3005

Price: \$7.55

Categories: [Bib Accessories](#)

Product Description



1/4 Barb Grey Premix Disconnect, Gas

Mfg CM Becker

[Read More](#)

SKU: 3001

Price: \$6.48

Categories: [Bib Accessories](#)

Product Description



1/4 Flare Black Premix Disconnect, Liquid

Mfg CM Becker

[Read More](#)

SKU: 3003

Price: \$6.48

Categories: [Bib Accessories](#)

Product Description
