



## 0-100 Psi 2 Inch Pressure Gauge With 1/4 Mpt, For Water Or Air, Lead Free

Max Temp 140°F, Black Steel Case With Acrylic Lens

[Read More](#)

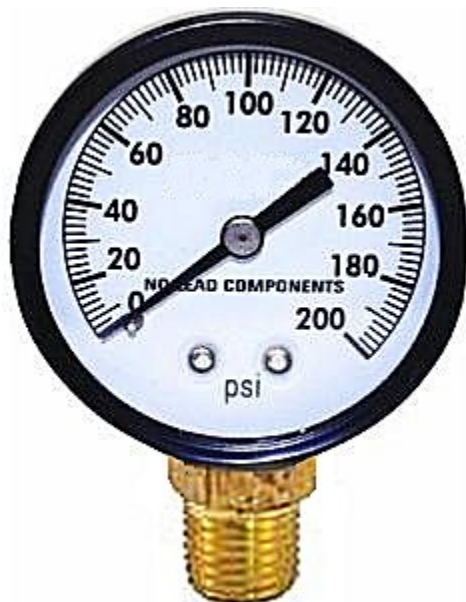
**SKU:** G100

**Price:** \$5.38

**Categories:** [Gauges](#)

### Product Description

---



## 0-200 Psi 2 Inch Pressure Gauge With 1/4 Mpt, For Water Or Air, Lead Free

Max Temp 140°F, Black Steel Case With Acrylic Lens

[Read More](#)

**SKU:** G200

**Price:** \$5.49

**Categories:** [Gauges](#)

### Product Description

---



## 1 Ft Black Extension Cord, 16/3 Sjt看 Rated At 105C, UL Approved For Out Door Use

16/3 Sjt看 105C, Standard NEMA 5-15 receptacle to NEMA 5-15 plug, perfect for every day connections, Rated for outdoor use, UL listed for safety. Commercial Grade.

[Read More](#)

**SKU:** ELE323-001

**Price:** \$2.80

**Categories:** [Cord](#)

### Product Description

---



## 1 Wide Bib Incline Rack

Non Stock, Item Must Be Ordered. Comes With Caps And Extensions To Add More Racks, Item Is For Will Call Only Or Can Be Drop Shipped From Mfg, Box Of 4

[Read More](#)

**SKU:** 1-BIFJ

**Price:** \$53.22

**Categories:** [Bib Accessories](#)

### Product Description

---



## 1/2 Hp Carbonator Motor

Non Stock must Be Ordered. Single/Split Phase, 1725/1425 rpm, 100-120/200-240V, 7.1.7-2/3.4-3.6 amp. 48Y frame with open drip proof (ODP) enclosure, rigid base mounting, & ball ball bearing system.

Marathon

[Read More](#)

**SKU:** 4806

**Price:** \$298.04

**Categories:** [Carbonator Accessories](#)

### Product Description

---



## 1/3 Hp Carbonator Motor

Single/Split Phase, 1725/1425 rpm, 100-120/200-240V, 5.5-5.6/2.7-2.8 amp. 48Y frame with open drip proof (ODP) enclosure, rigid base mounting, and ball ball bearing system.

[Read More](#)

**SKU:** 4805

**Price:** \$232.21

**Categories:** [Carbonator Accessories](#)

### Product Description

---



## 1/3 Hp Carbonator Motor

CARBONATOR MOTOR 1/3 HP, 115V/60HZ, 6.2 A, 1 PHASE, 1725 RPM, CONTINUOUS DUTY, NO CORD, 48Y FRAME, WELDED BASE, THERMALLY PROTECTED, CENTURY

[Read More](#)

**SKU:** 4406

**Price:** \$218.26

**Categories:** [Carbonator Accessories](#)

### Product Description

---



## 1/4 Barb Black Premix Disconnect, Liquid

Mfg CM Becker

[Read More](#)

**SKU:** 3002

**Price:** \$6.48

**Categories:** [Bib Accessories](#)

### Product Description

---



## 1/4 Barb Gray Premix Disconnect, Gas With SS Pin

Mfg CM Becker

[Read More](#)

**SKU:** 3005

**Price:** \$7.55

**Categories:** [Bib Accessories](#)

### Product Description

---



## 1/4 Barb Grey Premix Disconnect, Gas

Mfg CM Becker

[Read More](#)

**SKU:** 3001

**Price:** \$6.48

**Categories:** [Bib Accessories](#)

### Product Description

---



## 1/4 Flare Black Premix Disconnect, Liquid

Mfg CM Becker

[Read More](#)

**SKU:** 3003

**Price:** \$6.48

**Categories:** [Bib Accessories](#)

### Product Description

---



## 10 Gauge Black RVI Wire, 100 Foot Roll

Non Stock, Item Must Be Ordered. 10 gauge RVI hook-up wire is ideal for machine tools, control cabinets, automotive and marine applications. The thermoplastic insulation is moisture resistant and provides extra protection against nicks and cuts. UL style 1015/1230, 105°C, rated for 600 volts. Manufactured to meet or exceed the specifications of the RVI, NFDA, ANSI and J1128. CSA file no. 22035, UL file no. E51293.

Specifications printed on wire. Use in internal wiring where exposure to temperatures does not exceed 221°F or where exposure to oil at temperatures not exceeding 140°F. CSA type TEW FT1.

[Read More](#)

**SKU:** 29101-05

**Price:** \$93.52

**Categories:** [10 Gauge](#)

### Product Description

---