

Street Elbow 45°, Fpt x Mpt 1/8 x 1/8



[Read More](#)

SKU: 124A-A

Price: \$1.14

Categories: [Elbows](#)

Product Description

Street Elbow Fpt x Mpt 1/8 x 1/8



[Read More](#)

SKU: 116A-A

Price: \$1.68

Categories: [Elbows](#)

Product Description

Street Elbow Fpt x Mpt, Lead Free 1/4 x 1/4



Non Stock, Item Must Be Ordered

[Read More](#)

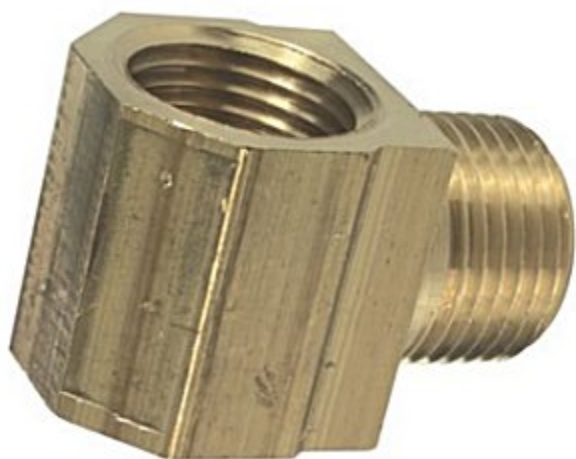
SKU: 116A-B

Price: \$2.74

Categories: [Elbows](#)

Product Description

Street Elbow Fpt x Mpt, Lead Free 3/8 x 3/8



Non Stock, Item Must Be Ordered

[Read More](#)

SKU: 116A-C

Price: \$3.18

Categories: [Elbows](#)

Product Description

Swell Latch, Replacement For Cecilware #M650AL



Fits Models GB4M-5.5-LD-U, GB5-LD-U, GB5MV-10-LD, GB6M-10-LD-U, GB8M-10-LD-U

[Read More](#)

SKU: M650A

Price: \$5.25

Categories: [Cecilware](#)

Product Description

Swell Latch

Switch, Dispense Mom.(Amber)120V Spst 10A 250V Pc/Hc Analo, Replacement For Wilbur Curtis, WC-152



[Read More](#)

SKU: WC-152

Price: \$11.90

Categories: [Wilbur Curtis](#)

Product Description

Switch, Dispense Mom.(Amber)120V Spst 10A 250V Pc/Hc Analo



Switch, Start, 250V Brown, Replacement For Bunn #03358.0000, #03358.1000

Fits Models Bunn, T3, T3A, T6, T6A, TU3

[Read More](#)

SKU: 03358.0000

Price: \$5.02

Categories: [Bunn](#)

Product Description

Switch, Start, 250V Brown



T5 Wedge Bulb, 13.5 Volts

[Read More](#)

SKU: 904

Price: \$0.54

Categories: [Bulbs](#)

Product Description



Tank Cover, 6 Holes, Replacement For Bloomfield #8512-45, Star #A6-70221

Fits Models 1090, 1091, 1092, 1093, 8541, 8542, 8543, 8571, 8573, 8774, 8778, 8778CA, 8783, 8783CA, 8785, 8785CA, 8785XL, 8791, 8792, 8793

[Read More](#)

SKU: 8512-45

Price: \$28.17

Categories: [Bloomfield](#)

Product Description

Tank Cover, 6 Holes, Star #A6-70221



Tank Heater Replacement #00943.000

Fits Models A10, A11, Axiom, Axiom Brew, CDBC Series, CDBC, CDBCFC, CDBCFC APS, CDBCFCP, CDBCFCP, COMBO BREWER, CWAPS-MV, CWT, CWT35-3T, CWTA, CWTF-35, CWTF-AP, CWTF-TWIN, CWTF1, CWTSR, CWTSR-MV, 3, FMD-4, FMD-5, FMD, HC-3, HW2, HW2A, IMIX-5S+ (Hot & Ice), DV, ITCB-DV HV, ITCB, LP, LCC-2 LP, My Ca

RL, RL35, RT, RT35, S, SA, SINGLE CD, SINGLE CDF, SINGLE CW, SINGLE CWTF, ST, ST-20, ST35, STA, STF, STF-20, STFA, Single Multi-BrewWISE DBC, T3, T3A, T6, T6A, TB-3, TB3, TB3-LP, TB3Q, TB3Q-LP, TB6, TB6Q, TNT-3, TNTF-3, TU-5, TU3, TU3Q, TU3Q-EZ, TU5Q, TW, TWF, TWF-15, TWF-EZ, TWIN-APS, TWIN-TC, VLPF, VP17, VP17A, VP17B, VPR, VPR APS, VPR TC, VPS (Lighted Switches), VPS (W/O Lighted Switches), iTCB

[Read More](#)

SKU: 00943.0000

Price: \$0.81

Categories: [Bunn](#)

Product Description

Tank Heater Gasket



Tank Lid Gasket, Replacement For Wilbur Curtis WC-43062,3 375000647

[Read More](#)

SKU: WC-43062

Price: \$7.56

Categories: [Wilbur Curtis](#)

Product Description



Taprite Primary Co2 Regulator, 1 Pressure 1 Product

Our Economy Series Primary Soft Drink Regulator is easy to use and to maintain. The set screw adjustment makes it a “set and forget” tool for maintaining constant pressure into your system. The regulator’s zinc bonnet and brass body and fittings help to minimize the chance for freeze ups during peak usage while also making it corrosion resistant and highly durable in a number of environments. This 1 Pressure 1 Product Regulator has a CGA320 Inlet, 1/4"Flare Outlet w/Check, and 160lb and 2000lbs Gauges so you can see both your output pressure and how much CO2 is left in your tank.

[Read More](#)

SKU: 3741

Price: \$78.92

Categories: [Bib Accessories](#)

Product Description
