

## Street Elbow Fpt x Mpt, Lead Free 1/4 x 1/4



Non Stock, Item Must Be Ordered

[Read More](#)

**SKU:** 116A-B

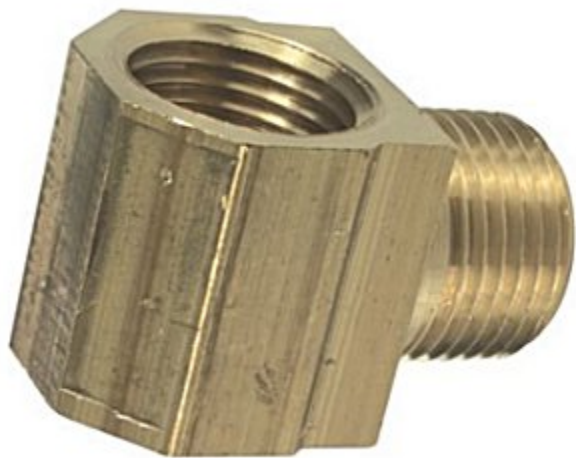
**Price:** \$2.74

**Categories:** [Elbows](#)

### Product Description

---

## Street Elbow Fpt x Mpt, Lead Free 3/8 x 3/8



[Read More](#)

**SKU:** 116A-C

**Price:** \$3.18

**Categories:** [Elbows](#)

### Product Description

---

## Swell Latch, Replacement For Cecilware #M650AL



Fits Models GB4M-5.5-LD-U, GB5-LD-U, GB5MV-10-LD, GB6M-10-LD-U, GB8M-10-LD-U

[Read More](#)

**SKU:** M650A

**Price:** \$5.25

**Categories:** [Cecilware](#)

### Product Description

Swell Latch

---

## Switch On/Off 120V Red, Replacement For Bloomfield #6710-23, Star #2E-72946



Fits Models 1906, 8540, 8541, 8542, 8543, 8571, 8572, 8573, 8574, 8708, 8851, 8852, 9003, 9003CA, 9010, 9012, 9012CA, 9016, Bloomfield

[Read More](#)

**SKU:** 6710-23

**Price:** \$2.61

**Categories:** [Bloomfield](#)

### Product Description

Switch On/Off Red 120V, Star #2E-72946

---



SERIES, IA-AP, IA-LD, IA-LP, IA-S, IA-TC, IA-TD, K, K3A, K3AF, K5A, K5AF, KB1-1F, KB2-2F, KB3-3F, KP-1, KP-2, KP-3, KP-4, KP-P, KP1A, KP1AF, KP2A, KP2AF, KP3A, KP3AF, KP4A, KP4AF, KPPA, KPPAF, KSP-1, KSP-2, KSP-3, KSP-4, KSP1A, KSP1AF, KSP2A, KSP2AF, KSP3A, KSP3AF, KSP4A, KSP4AF, KT3, L, LPA, LPF, NK, NKL3, NKL3A-AF, NKLD, NKLDA-AF, NKLP1, NKLP1A-AF, NKLP2, NKLP2A-AF, NKLP3, NKLP3A-AF, NKLP4, NKLP4A-AF, NKLP5, NKLP5A-AF, NKPD, NKPDA-AF, NKPP, NKPPA-AF, NKT3-3AF, NKT5-5AF, R, RC2A, RC2AF / RD3AF, RD3A

[Read More](#)

**SKU:** 100085

**Price:** \$2.61

**Categories:** [Newco](#)

## Product Description

Switch On/Off 120V, RED

---



## Switch, Dispense Mom.(Amber)120V Spst 10A 250V Pc/Hc Analo, Replacement For Wilbur Curtis #WC-152

[Read More](#)

**SKU:** WC-152

**Price:** \$11.90

**Categories:** [Wilbur Curtis](#)

## Product Description

Switch, Dispense Mom.(Amber)120V Spst 10A 250V Pc/Hc Analo

---



## Switch, Start, 250V Brown, Replacement For Bunn #03358.0000, #03358.1000

Fits Models Bunn, T3, T3A, T6, T6A, TU3

[Read More](#)

**SKU:** 03358.0000

**Price:** \$5.02

**Categories:** [Bunn](#)

### Product Description

Switch, Start, 250V Brown

---



## T5 Wedge Bulb, 13.5 Volts

[Read More](#)

**SKU:** 904

**Price:** \$0.54

**Categories:** [Bulbs](#)

### Product Description

---





## Tank Cover, 6 Holes, Replacement For Bloomfield #8512-45, Star #A6-70221

Fits Models 1090, 1091, 1092, 1093, 8541, 8542, 8543, 8571, 8573, 8774, 8778, 8778CA, 8783, 8783CA, 8785, 8785CA, 8785XL, 8791, 8792, 8793

[Read More](#)

**SKU:** 8512-45

**Price:** \$28.17

**Categories:** [Bloomfield](#)

### Product Description

Tank Cover, 6 Holes, Star #A6-70221



## Tank Heater Replacement #00943.000

Fits Models A10, A11, Axiom, Axiom Brew, CDBC Series, CDBC, CDBCFC, CDBCFC APS, CDBCFCP, CDBCFCP, COMBO BREWER, CWAPS-MV, CWT, CWT35-3T, CWTA, CWTF-35, CWTF-AP, CWTF-TWIN, CWTF1, CWTSR, CWTSR-MV, 3, FMD-4, FMD-5, FMD, HC-3, HW2, HW2A, IMIX-5S+ (Hot & Ice), DV, ITCB-DV HV, ITCB, LP, LCC-2 LP, My Ca

RL, RL35, RT, RT35, S, SA, SINGLE CD, SINGLE CDF, SINGLE CW, SINGLE CWTF, ST, ST-20, ST35, STA, STF, STF-20, STFA, Single Multi-BrewWISE DBC, T3, T3A, T6, T6A, TB-3, TB3, TB3-LP, TB3Q, TB3Q-LP, TB6, TB6Q, TNT-3, TNTF-3, TU-5, TU3, TU3Q, TU3Q-EZ, TU5Q, TW, TWF, TWF-15, TWF-EZ, TWIN-APS, TWIN-TC, VLPF, VP17, VP17A, VP17B, VPR, VPR APS, VPR TC, VPS (Lighted Switches), VPS (W/O Lighted Switches), iTCB

[Read More](#)

**SKU:** 00943.0000

**Price:** \$0.81

**Categories:** [Bunn](#)

## Product Description

Tank Heater Gasket

---

## Tank Lid Gasket, Replacement For Wilbur Curtis WC-43062

[Read More](#)

**SKU:** WC-43062

**Price:** \$5.71

**Categories:** [Wilbur Curtis](#)



## Product Description

---