

Barb Beer Stem 1/2, For Use With 1020 Beer Nut And 8016 Beer Washer



Non Stock, Item Must Be Ordered.

[Read More](#)

SKU: S22-8CF

Price: \$1.72

Categories: [Barb](#)

Product Description

Barb Beer Stem 1/4, For Use With 1020 Beer Nut And 8016 Beer Washer



[Read More](#)

SKU: S22-4CF

Price: \$1.84

Categories: [Barb](#)

Product Description

Barb Beer Stem 3/8, For Use With 1020 Beer Nut And 8016 Beer Washer



[Read More](#)

SKU: S22-6CF

Price: \$1.82

Categories: [Barb](#)

Product Description

Barb Beer Stem 5/16, For Use With 1020 Beer Nut And 8016 Beer Washer



[Read More](#)

SKU: S22-5CF

Price: \$2.00

Categories: [Barb](#)

Product Description

Barb Beer Stem 7/16, For Use With 1020 Beer Nut And 8016 Beer Washer



Non Stock, Item Must Be Ordered.

[Read More](#)

SKU: S22-7CF

Price: \$1.96

Categories: [Barb](#)

Product Description



Base For Softener, Inside Diameter 6 1/2 Inches

Non Stock, Item Must Be Ordered

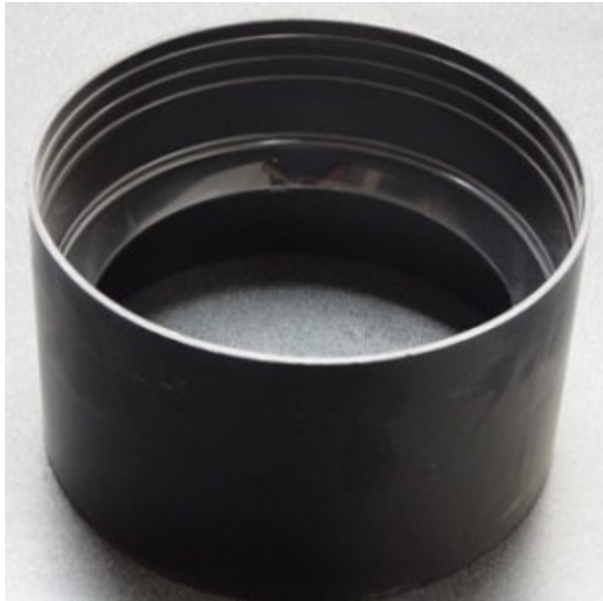
[Read More](#)

SKU: WS68B

Price: \$11.82

Categories: [Softeners](#)

Product Description



Base For Softener, Inside Diameter 8 3/8 Inches

[Read More](#)

SKU: WS15B

Price: \$10.56

Categories: [Softeners](#)

Product Description

Base, Chrome Shield Sight Gauge, Replacement For Bunn, 01222.0000

Fits Models 1 GPR, 1 GPR-FF, 1.5 GPR, 1.5 GPR-FF, 1.75 GPR-FF, 2 GPR, SH SERVER 1.0, SH SERVER 1.5, SH SERVER 1.75, TF SERVER, ThermoFresh

[Read More](#)

SKU: 01222.0000

Price: \$6.88

Categories: [Bunn](#)

Product Description

Base, Chrome Shield Sight Gauge



Base, Chrome Shield Sight Gauge, Replacement For Grindmaster, AA-958 And 220-00132

Fits Models APB-330V2, APB-430V2

[Read More](#)

SKU: 220-00132

Price: \$8.78

Categories: [Grindmaster](#)

Product Description

Base, Chrome Shield Sight Gauge



Base, Chrome Shield Sight Gauge, Replacement For Wilbur Curtis, WC-2004, 3375000166

[Read More](#)

SKU: WC-2004

Price: \$10.03

Categories: [Wilbur Curtis](#)

Product Description

Base, Chrome Shield Sight Gauge



Bearing Sleeve, Agitator Models, Replacement For Grindmaster #220-00305

Fits Models: CS-1D-16, CS-1D-22, CS-2D-16, CS-2D-22, CS-2E-10, CS-2E-16, CS-2E-22, CS-3D-16, CS-3D-22, CS-3L-16, CS-3L-22, CS-4E-16, and CS-4E-22

[Read More](#)

SKU: 220-00305

Price: \$7.08

Categories: [Grindmaster](#)

Product Description



Bearing Sleeve, Replacement For Grindmaster #3220

Fits Models D15, D155, D25, D25-4, D255, D35, D35-4, D355, E27, E275, E276, E29, E47, E475, E476, E49, G-Cool, HD15, WD15, WD155, WD25, WD255, WD35, WD355

[Read More](#)

SKU: 3220

Price: \$11.90

Categories: [Grindmaster](#)

Product Description

Bearing Sleeve
