

Barb Splicer, Nylon 1/2 x 1/2

[Read More](#)

SKU: HMP-8

Price: \$0.67

Categories: [Barb](#)



Product Description

Barb Splicer, Nylon 1/4 x 1/4

Non Stock, Item Must Be Ordered

[Read More](#)

SKU: HMP-4

Price: \$0.45

Categories: [Barb](#)



Product Description

Connector Barb x Mpt, Nylon 1/2 x 1/2



[Read More](#)

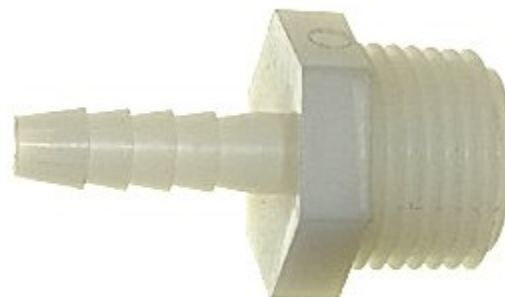
SKU: 201P-8D

Price: \$0.72

Categories: [Barb](#)

Product Description

Connector Barb x Mpt, Nylon 1/4 x 1/2



[Read More](#)

SKU: 201P-4D

Price: \$0.68

Categories: [Barb](#)

Product Description

Connector Barb x Mpt, Nylon 3/8 x 3/8



[Read More](#)

SKU: 201P-6C

Price: \$0.52

Categories: [Barb](#)

Product Description

Elbow Barb x Barb, Polyethylene 5/8 x 5/8



Must be ordered, Non Stock. Drain Fitting For Machines

[Read More](#)

SKU: ELP-10

Price: \$0.68

Categories: [Barb](#)

Product Description



Elbow Barb x Mpt, Nylon 1/4 x 1/4

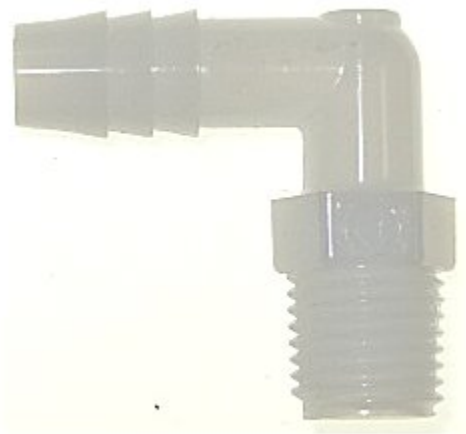
[Read More](#)

SKU: HE1P-4B

Price: \$0.68

Categories: [Barb](#)

Product Description



Elbow Barb x Mpt, Nylon 3/8 x 1/4

[Read More](#)

SKU: HE1P-6B

Price: \$1.02

Categories: [Barb](#)

Product Description

Elbow Barb x Mpt, Nylon 3/8 x 3/8



[Read More](#)

SKU: HE1P-6C

Price: \$1.09

Categories: [Barb](#)

Product Description

Nylon Barb Tee, 1/4x1/4x1/4



[Read More](#)

SKU: NTP-4

Price: \$0.52

Categories: [Barb](#)

Product Description



Pvc Plastic Shut Off Valve Barb x Barb 1/2

For use with product or water, rated 100 psi

[Read More](#)

SKU: PVCB-8

Price: \$6.21

Categories: [Barb](#)

Product Description



Pvc Plastic Shut Off Valve Barb x Barb 1/4

For use with product or water, rated 100 psi

[Read More](#)

SKU: PVCB-4

Price: ~~\$5.87~~ \$5.31

Categories: [Barb](#)

Product Description
