

## Street Elbow Fpt x Mpt, Lead Free 1/4 x 1/4



Non Stock, Item Must Be Ordered

[Read More](#)

**SKU:** 116A-B

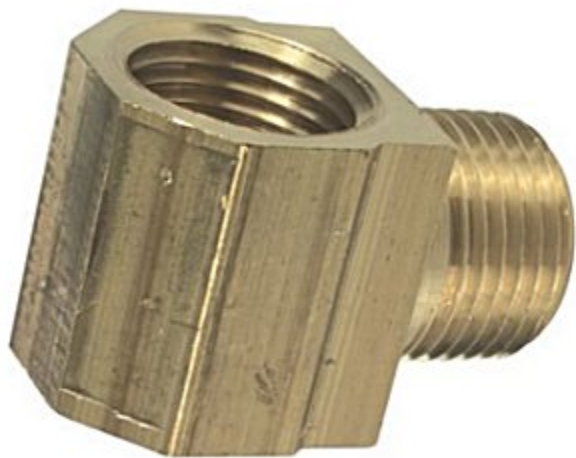
**Price:** \$2.74

**Categories:** [Elbows](#)

### Product Description

---

## Street Elbow Fpt x Mpt, Lead Free 3/8 x 3/8



Non Stock, Item Must Be Ordered

[Read More](#)

**SKU:** 116A-C

**Price:** \$3.18

**Categories:** [Elbows](#)

### Product Description

---

## Swell Latch, Replacement For Cecilware #M650AL



Fits Models GB4M-5.5-LD-U, GB5-LD-U, GB5MV-10-LD, GB6M-10-LD-U, GB8M-10-LD-U

[Read More](#)

**SKU:** M650A

**Price:** \$5.25

**Categories:** [Cecilware](#)

### Product Description

Swell Latch

---

## Switch, Dispense Mom.(Amber)120V Spst 10A 250V Pc/Hc Analo, Replacement For Wilbur Curtis, WC-152



[Read More](#)

**SKU:** WC-152

**Price:** \$11.90

**Categories:** [Wilbur Curtis](#)

### Product Description

Switch, Dispense Mom.(Amber)120V Spst 10A 250V Pc/Hc Analo

---



## Switch, Start, 250V Brown, Replacement For Bunn #03358.0000, #03358.1000

Fits Models Bunn, T3, T3A, T6, T6A, TU3

[Read More](#)

**SKU:** 03358.0000

**Price:** \$5.02

**Categories:** [Bunn](#)

### Product Description

Switch, Start, 250V Brown

---



## T5 Wedge Bulb, 13.5 Volts

[Read More](#)

**SKU:** 904

**Price:** \$0.54

**Categories:** [Bulbs](#)

### Product Description

---



## Tank Cover, 6 Holes, Replacement For Bloomfield #8512-45, Star #A6-70221

Fits Models 1090, 1091, 1092, 1093, 8541, 8542, 8543, 8571, 8573, 8774, 8778, 8778CA, 8783, 8783CA, 8785, 8785CA, 8785XL, 8791, 8792, 8793

[Read More](#)

**SKU:** 8512-45

**Price:** \$28.17

**Categories:** [Bloomfield](#)

### Product Description

Tank Cover, 6 Holes, Star #A6-70221



## Tank Heater Replacement #00943.000

Fits Models A10, A11, Axiom, Axiom Brew, CDBC Series, CDBC, CDBCFC, CDBCFC APS, CDBCFCF, CDBCFCF APS, COMBO BREWER, CWAPS-MV, CWT, CWT35-3T, CWTA, CWTF-35, CWTF-APS, CWTF-TWIN, CWTF-TW, CWTSR, CWTSR-MV, 3, FMD-4, FMD-5, FMD, HC-3, HW2, HW2A, IMIX-5S+ (Hot & Ice), DV, ITCB-DV HV, ITCB, LP, LCC-2 LP, My Ca

RL, RL35, RT, RT35, S, SA, SINGLE CD, SINGLE CDF, SINGLE CW, SINGLE CWTF, ST, ST-20, ST35, STA, STF, STF-20, STFA, Single Multi-BrewWISE DBC, T3, T3A, T6, T6A, TB-3, TB3, TB3-LP, TB3Q, TB3Q-LP, TB6, TB6Q, TNT-3, TNTF-3, TU-5, TU3, TU3Q, TU3Q-EZ, TU5Q, TW, TWF, TWF-15, TWF-EZ, TWIN-APS, TWIN-TC, VLPF, VP17, VP17A, VP17B, VPR, VPR APS, VPR TC, VPS (Lighted Switches), VPS (W/O Lighted Switches), iTCB

[Read More](#)

**SKU:** 00943.0000

**Price:** \$0.81

**Categories:** [Bunn](#)

## Product Description

Tank Heater Gasket

---



## Tank Lid Gasket, Replacement For Wilbur Curtis WC-43062,3 375000647

[Read More](#)

**SKU:** WC-43062

**Price:** \$7.56

**Categories:** [Wilbur Curtis](#)

## Product Description

---



## Taprite Primary Co2 Regulator, 1 Pressure 1 Product

Our Economy Series Primary Soft Drink Regulator is easy to use and to maintain. The set screw adjustment makes it a "set and forget" tool for maintaining constant pressure into your system. The regulator's zinc bonnet and brass body and fittings help to minimize the chance for freeze ups during peak usage while also making it corrosion resistant and highly durable in a number of environments. This 1 Pressure 1 Product Regulator has a CGA320 Inlet, 1/4" Flare Outlet w/Check, and 160lb and 2000lbs Gauges so you can see both your output pressure and how much CO2 is left in your tank.

[Read More](#)

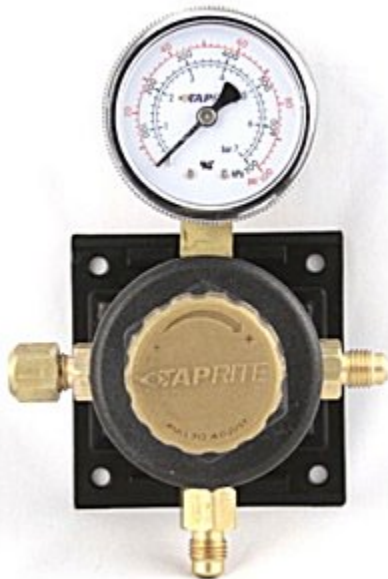
**SKU:** 3741

**Price:** \$81.85

**Categories:** [Bib Accessories](#)

### Product Description

---



## Taprite Secondary Co2 Regulator, 1 Pressure 1 Product

Secondary Soda Regulator, 1P1P, 1/4" Flare Inlet, 1/4" Flare w/Check Outlet, 100lb Gauge

[Read More](#)

**SKU:** 5261SN

**Price:** \$69.43

**Categories:** [Bib Accessories](#)

### Product Description

---



**Taste, Odor, Scale, Sediment Filter. Bracket, Head, And Screws. 10 inch Cartridge 1.65 Gpm, 13,000 Gallons life, 3/8 Fpt Head., Replacement For Wilbur Curtis, CSC10AC00, 1360101329**

[Read More](#)

**SKU:** CSC10AC00

**Price:** \$69.81

**Categories:** [Wilbur Curtis](#)

**Product Description**

Taste, Odor, Scale, Sediment Filter. Bracket, Head, And Screws. 10" Cartridge 1.65 Gpm, 10,000 Gallons life, 3/8 Fpt Head.

---